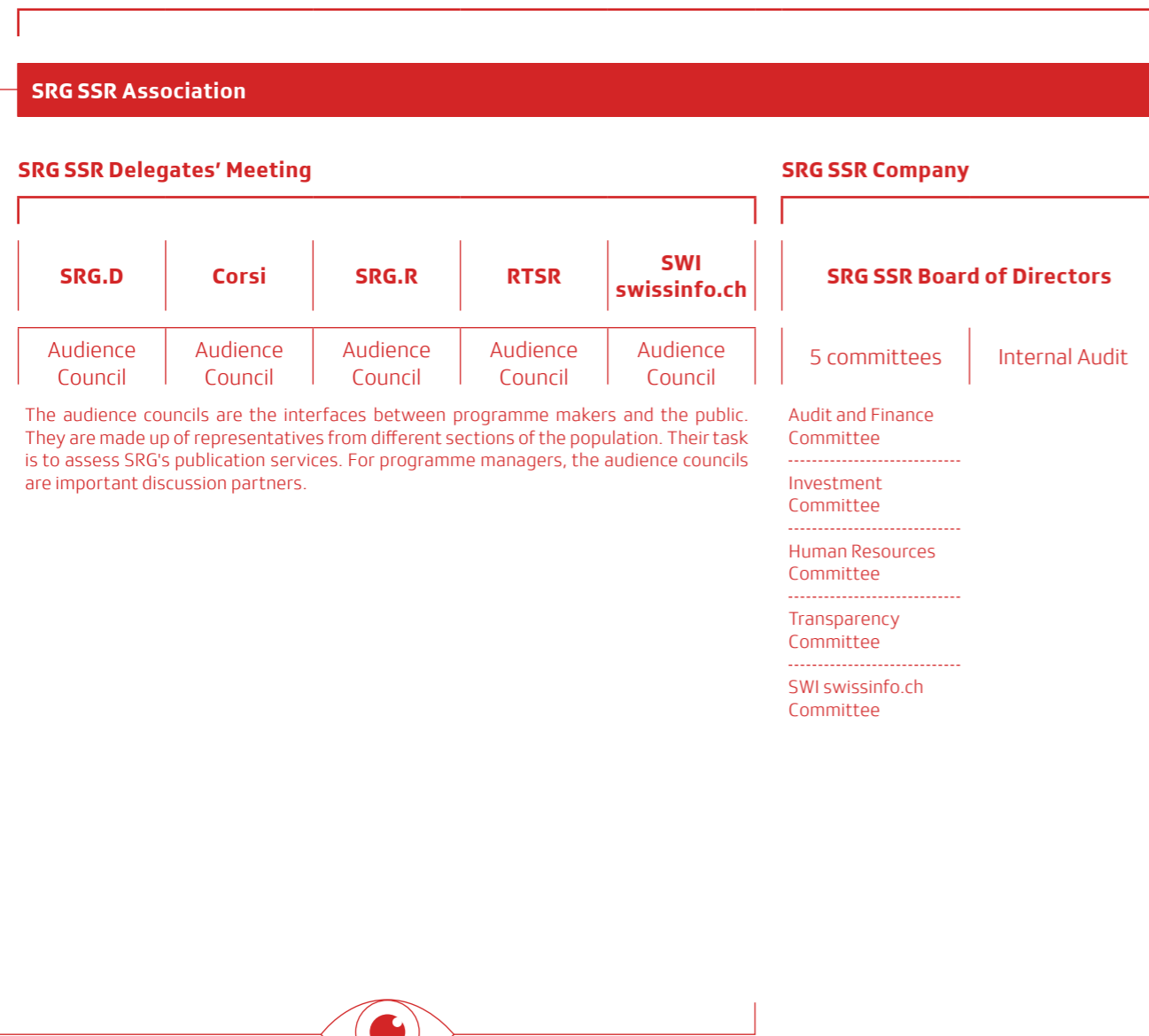


## SRG's internal and external supervisory bodies

We are systematically supervised by many instances, and the public have opportunities to have their say, via internal monitoring bodies with access to the ownership structure or via external monitoring bodies such as the five SRG Ombudsman's Offices and the Independent Complaints Authority (UBI).

### SRG SSR supervision

#### Internal monitoring



#### External monitoring

